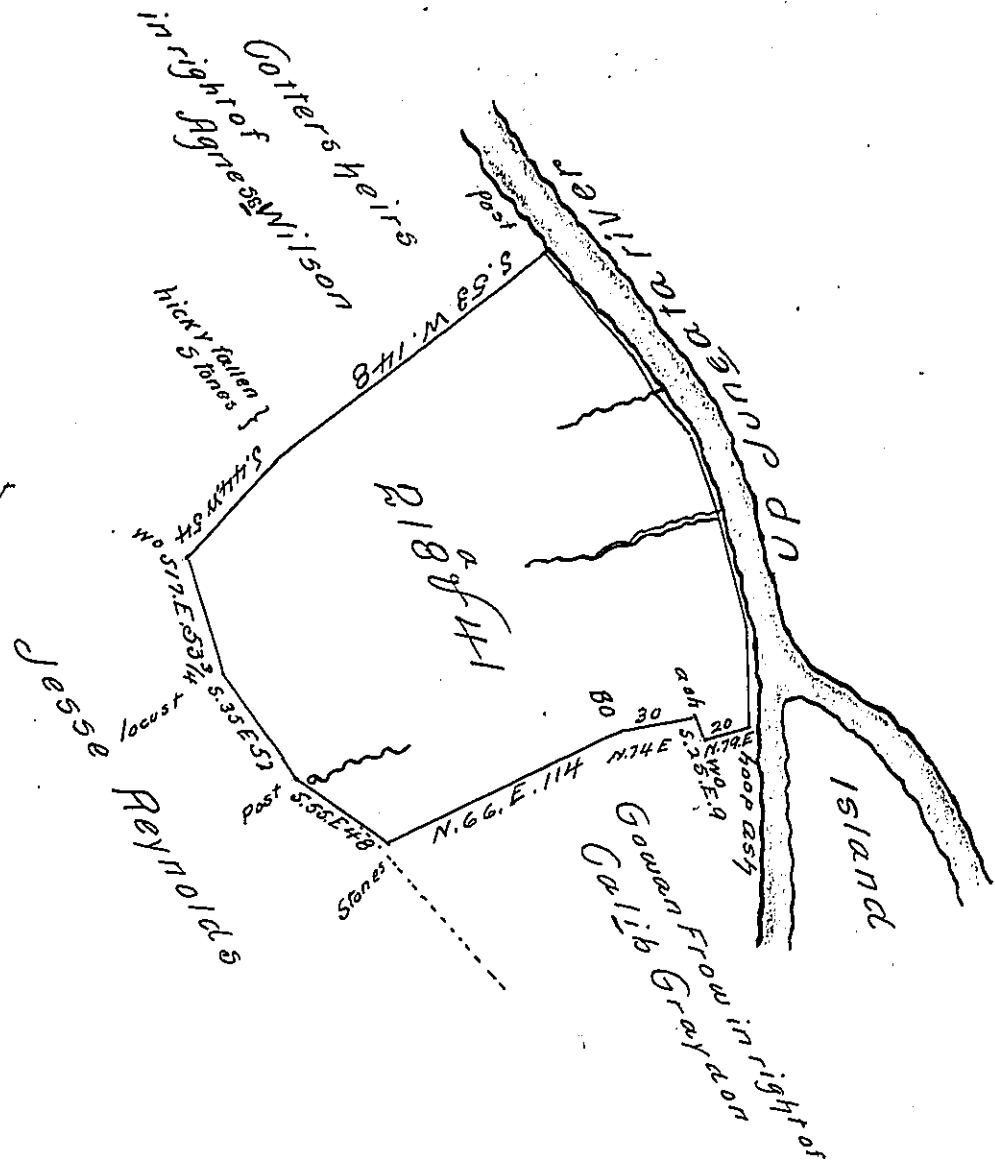


Courses & distances from  
hoop ash up river to Post

- 1 North 41
- 2 N 14 W 62
- 3 N 24 W 24
- 4 N 41 W 20
- 5 N 37 W 26
- 6 N 39 W 51 Post



A Draft of two hundred and eighteen acres and forty one perches of land with six per Cent for Roads Situate in Milford township in Mifflin late Cumberland county which appears to have been surveyed 6<sup>th</sup> July 1768 in pursuance of an Order to William Speedy dated 4<sup>th</sup> August 1767. Resurveyed and Corrected 16<sup>th</sup> Feb. 1815 in pursuance of an order of the Honorable the Board of property dated 6<sup>th</sup> January 1815.

Michael M. Monahan

To Richard T. Leech Esquire  
Surveyor General of Pennsylvania

IN TESTIMONY that the above is a copy of the original remaining on file in the Department of Internal Affairs of Pennsylvania, made conformably to an Act of Assembly approved the 16th day of February, 1833, I have hereunto set my Hand and caused the Seal of said Department to be affixed at Harrisburg, this fifteenth day of October 1904

*Joseph P. Brown*  
Secretary of Internal Affairs.